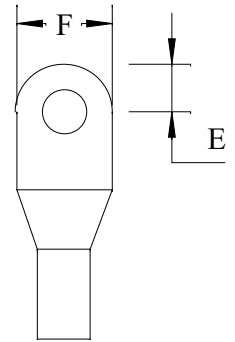
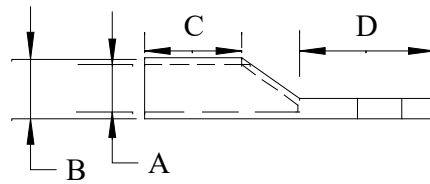


LUGS FOR STRANDED CONDUCTOR CABLE

Table 1 (1.5mm² to 2.5mm²)



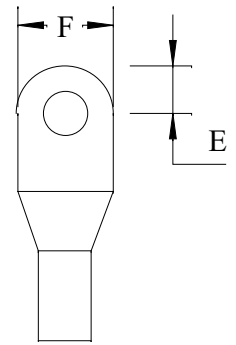
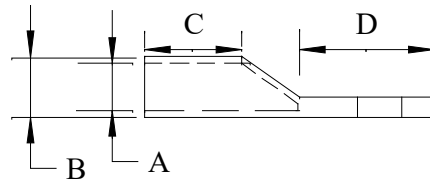
Product Information:

Nominal Lug Size	Typical Conductors	Stud Size	Nominal Dimensions (mm)							Weight Per 100
			Barrel			Spade				
(mm ²)	(mm)	(mm ²)	(mm)	I.D A	O.D B	Length C	Length D	Hole Pos. E	Width F	(Kg)
1,5	3/0.81	1	3				9	4,5	7	0,1
			4	1,9	3,8	7	12	4,5	7	0,1
			5				12	4,5	8	0,2
			6				13	5,5	9	0,2
2,5	3/1.04	1,5	3				8,5	4,5	7	0,2
			4				12	4,5	7	0,2
			5	2,4	3,9	7,3	12	4,5	9	0,2
			6				13	5,5	9,5	0,2
			8				15	7,5	12	0,2



LUGS FOR STRANDED CONDUCTOR CABLE

Table 1 (4mm² to 6mm²)

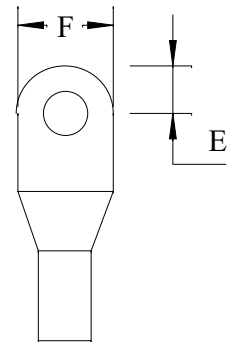
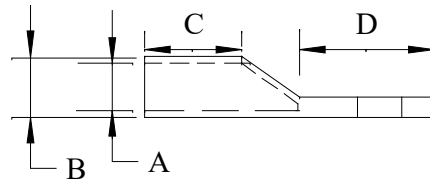


Product Information:

Nominal Lug Size	Typical Conductors	Stud Size	Nominal Dimensions (mm)							Weight Per 100	
			Barrel			Spade					
(mm ²)	(mm)	(mm ²)	(mm)	I.D	O.D	Length	Length	Hole Pos.	Width	(Kg)	
	Circular Stranded	Flexible Stranded		A	B	C	D	E	F		
4	7/0.86	2,5	3				9	4,5	7	0,2	
			4				12	4,5	7	0,2	
			5	2,8	4,7	8	12	4,5	8,5	0,2	
			6				13	5,5	10	0,2	
			8				17	6,5	13	0,2	
			10				11	19	7,5	14	0,3
6	7/1.05	4	4				12	4,5	7,5	0,3	
			5				12	4,5	8,5	0,3	
			6	3,4	5,3	8,5	13	5,5	9,5	0,3	
			8				9,3	17	7	13	0,3
			10				11	19	7,5	15	0,3

LUGS FOR STRANDED CONDUCTOR CABLE

Table 1 (25mm² to 35mm²)

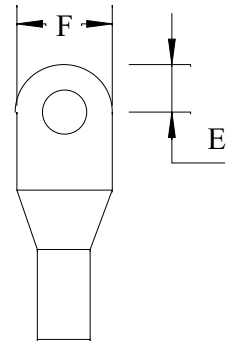
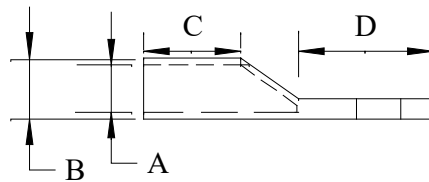


Product Information:

Nominal Lug Size	Typical Conductors	Stud Size	Nominal Dimensions (mm)							Weight Per 100
			Barrel			Spade				
(mm ²)	(mm)	(mm ²)	(mm)	I.D	O.D	Length	Length	Hole Pos.	Width	(Kg)
	Circular Stranded	Flexible Stranded		A	B	C	D	E	F	
25	19/1.35	16	6				16	6	14	0,7
			8				17	8	14	0,8
	18/1.55		10	6,9	9	15	18	8	16	0,8
			12				21	11	18	0,8
35	18/1.59	25	6				18	8	16	1,3
			8				18	9	16	1,2
			10	8,2	10,7	15	19	9	16	1,2
	19/1.55		12				22	10	18	1,2
			16			16	30	13	24	1,3

LUGS FOR STRANDED CONDUCTOR CABLE

Table 1 (95mm² to 120mm²)

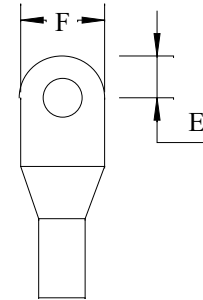
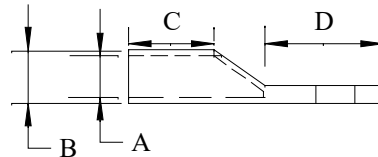


Product Information:

Nominal Lug Size	Typical Conductors	Stud Size	Nominal Dimensions (mm)							Weight Per 100
			Barrel			Spade				
(mm ²)	(mm)	(mm ²)	(mm)	I.D	O.D	Length	Length	Hole Pos.	Width	(Kg)
	Circular Stranded	Flexible Stranded		A	B	C	D	E	F	
95	36/1.86	70	8				24	9,5	25	3,8
			10				26	13	26	3,6
	37/1.83	12	13,5	17,4	23	28	13	26	4,2	
		16				32	14	28	4,4	
120	36/2.08	70/95	10				26	12	27	6,0
			12	15,5	19,8	26	28	12	28	5,6
	37/2.05	16				32	14	30	6,0	
		20				36	16	32	5,6	

LUGS FOR STRANDED CONDUCTOR CABLE

Table 1 (150mm² to 240mm²)

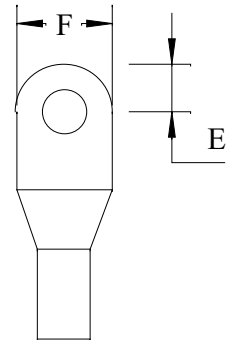
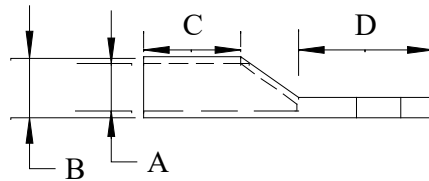


Product Information:

Nominal Lug Size	Typical Conductors	Stud Size	Nominal Dimensions (mm)							Weight Per 100
			Barrel			Spade				
(mm ²)	(mm)	(mm ²)	(mm)	I.D	O.D	Length	Length	Hole Pos.	Width	(Kg)
	Circular Stranded	Flexible Stranded		A	B	C	D	E	F	
150	36/2.34	95/120	10				31	12	31	8,4
			12	17	22	27	33	16	32	8,4
	37/2.29	16				35	16	32	8,8	
		20				36	16	32	8,4	
185	36/2.59	120/150	10				29	12,5	34	10,8
			12	19	24,4	29	31	16	34	10,0
	37/2.53	16				34	16	36	12,0	
		20				40	19	36	12,8	
240	60/2.23	150/185	10				16	16	40	16,0
			12	21,5	27,7	33	16	16	40	16,0
	61/2.26	16				16	20	40	16,0	
		20				20	20	40	16,0	

LUGS FOR STRANDED CONDUCTOR CABLE

Table 1 (300mm² to 1000mm²)



Product Information:

Nominal Lug Size	Typical Conductors	Stud Size	Nominal Dimensions (mm)							Weight Per 100
			Barrel			Spade				
(mm ²)	(mm)	(mm ²)	(mm)	I.D	O.D	Length	Length	Hole Pos.	Width	(Kg)
	Circular Stranded	Flexible Stranded		A	B	C	D	E	F	
300	60/2.55	185/240	10				45	-	45	22,0
			12	24,5	31,3	35	35	15	45	22,0
	61/2.53	16				45	15	45	22,0	
		20				45	18	45	22,0	
400	91/2.39	240/300	16	27,5	35,6	41	47	-	49	38,0
							47	24	51	38,0
500	91/2.67	300/400	-	31,6	40	41,5	54	-	58	54,0
630	127/2.54	400/500	-	34,5	44,6	53	65	-	64	80,0
800	127/2.87	630	-	40	51,2	68	75	-	73	170,0
1000	127/3.22		-	44	56,6	75	75	-	81	

Complete your Project:

Please select the items you require and we will be in touch

Cables and Wires:

Indoor
Outdoor
General
Other
Let an ACTOM
Specialist Contact you

Lighting:

Indoor
Outdoor
General
Other
Let an ACTOM
Specialist Contact you

Transformers (Distribution):

Indoor
Outdoor
General
Other
Let an ACTOM
Specialist Contact you

Accessories:

Indoor
Outdoor
General
Other
Let an ACTOM
Specialist Contact you

Specific Information:

Address: 4 Branch Road, Germiston 1401, P.O. Box 678, Germiston 1400

For more Information on this Product Please Send us the Following

Product Information:

Product Name:

Quantity:

Project Name:

Date the Product is required:

Your Contact Information:

Name and Surname:

Company:

Email:

Phone Number:

Province:

Thank You

For having a Look at this Product

Please send this PDF back to us with all your Information

Scan the QR Code to visit our Website:

